

**INSTRUMENT APPROACH CHART**

**AERODROME ELEV 304'**  
 HEIGHTS RELATED TO  
 THR RWY 24 - ELEV 301'

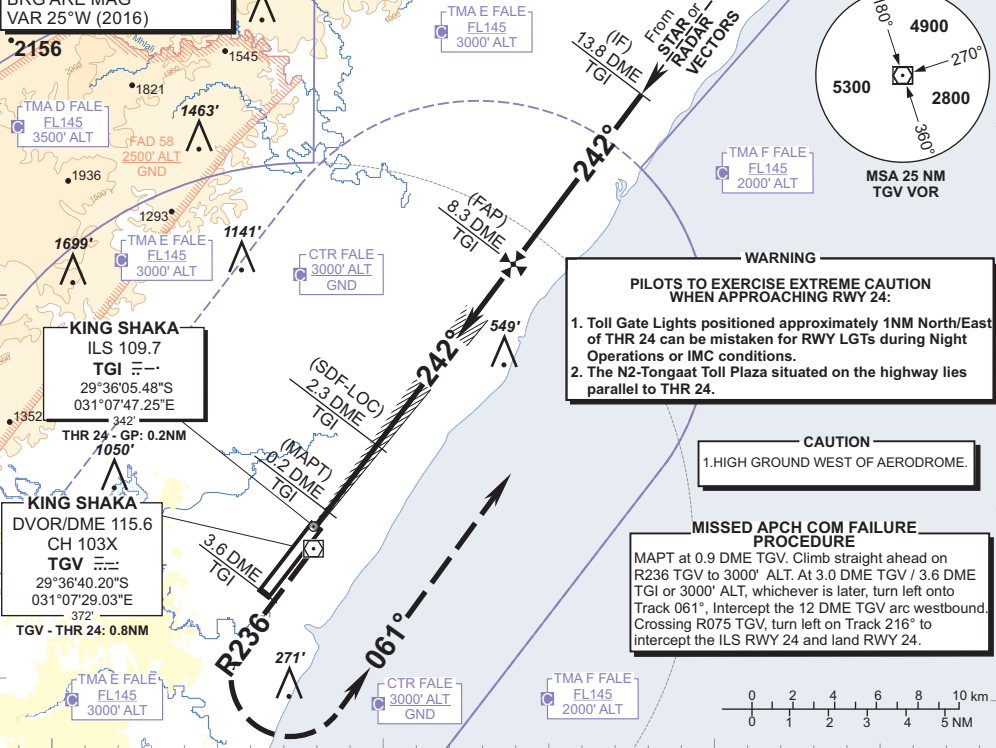
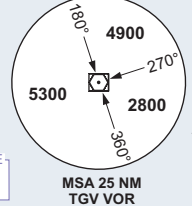
RADAR APP 125.75  
 TWR 118.45  
 GND 121.65  
 ATIS 127.00

**DURBAN**  
 (KING SHAKA INTERNATIONAL)  
**ILS Z RWY 24 CAT II**  
 CAT A - D



**VOR and DME REQUIRED**

**ELEV, ALT & HGT IN FEET**  
 DIST IN NM  
 BRG ARE MAG  
 VAR 25°W (2016)

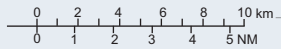


**WARNING**  
**PILOTS TO EXERCISE EXTREME CAUTION WHEN APPROACHING RWY 24:**

1. Toll Gate Lights positioned approximately 1NM North/East of THR 24 can be mistaken for RWY LGTs during Night Operations or IMC conditions.
2. The N2-Tongaat Toll Plaza situated on the highway lies parallel to THR 24.

**CAUTION**  
 1. HIGH GROUND WEST OF AERODROME.

**MISSED APCH COM FAILURE PROCEDURE**  
 MAPT at 0.9 DME TGV. Climb straight ahead on R236 TGV to 3000' ALT. At 3.0 DME TGV / 3.6 DME TGI or 3000' ALT, whichever is later, turn left onto Track 061°. Intercept the 12 DME TGV arc westbound. Crossing R075 TGV, turn left on Track 216° to intercept the ILS RWY 24 and land RWY 24.



	031°00'E	031°00'E	031°10'E	031°10'E	031°10'E	031°20'E	031°20'E	031°20'E	031°20'E	031°20'E
TGI ILS/DME	8.3	8	7	6	5	4	3	2.3	2	1
ADVISORY ALT (HGT)	3000 (2699)	2910 (2609)	2580 (2279)	2250 (1949)	1930 (1629)	1600 (1299)	1280 (979)	1050 (749)	950 (649)	620 (319)

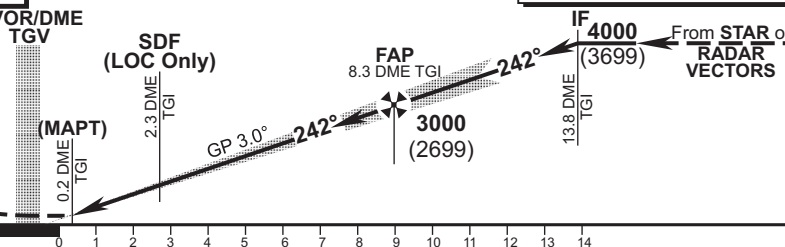
**TRANSITION ALT 5500**  
**TRANSITION LEVEL ATC**

**INA ALE: via STAR or RADAR VECTORS**

**MISSED APPROACH: DVOR/DME TGV**  
 Climb straight ahead on R236 TGV to 3000' ALT. At 3.0 DME TGV/3.6 DME TGI or 3000' ALT, whichever is later, turn left onto Track 061° for radar vectors onto the ILS RWY 24.

**ILS RDH 54**

**THR ELEV 301**  
 NM to/from THR RWY 24



		OCA (H)	A	B	C	D/DL	GS	KT	80	100	120	140	160
Straight-in Approach	With 2.5% Missed APCH Gradient	CAT I	1188 (887)	1188 (887)	1188 (887)	1194 (893)	FAP to THR	M:S	6:05	4:52	4:03	3:29	3:02
		CAT II	1088 (787)	1094 (793)	1103 (802)	1122 (821)	Rate of descent	FPM	435	544	652	761	870
		GP INOP	1420 (1133)	1420 (1133)	1420 (1133)	1420 (1133)	NOTE:						
	With 3.4% Missed APCH Gradient	CAT I	501 (200)	501 (200)	501 (200)	507 (206)	1. PROCEDURE ONLY APPLICABLE VIA STAR OR RADAR VECTORS.						
	CAT II	401 (100)	407 (106)	416 (115)	435 (134)	2. In the event of Radio Communication Failure complete the turn on to the ILS and complete the ILS/LOC RWY 24 approach and land RWY 24.							
	GP INOP	730 (443)	730 (443)	730 (443)	730 (443)	3. Circle to land at the discretion of the pilot in command.							
Circling: AD ELEV		1000 (696)	1000 (696)	1270 (966)	1350 (1046)								

CHANGE: OCA(H) Advisory ALT Table/VAR